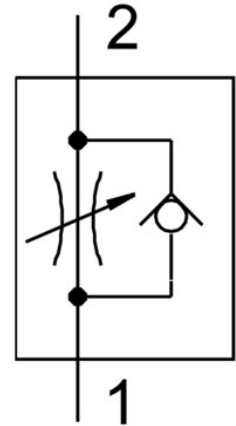


One-way flow control valve GR-1/2

Part number: 3720

FESTO



Data sheet

Feature	Value
Type code	GR
Valve function	Flow control non-return function
Pneumatic connection 1	G1/2
Pneumatic connection 2	G1/2
Adjusting element	Knurled screw
Type of mounting	With through-hole
Standard nominal flow rate in flow control direction	1620 l/min
Standard nominal flow rate in non-return direction	2760 l/min
Operating pressure	0.1 bar ... 10 bar
Ambient temperature	-20 °C ... 75 °C
Housing material	Die-cast zinc
Explosion prevention and protection	Observe the information on the certificate Zone 1 (ATEX) Zone 2 (ATEX) Zone 21 (ATEX) Zone 22 (ATEX)
Mounting position	Any
Symbol	00991453
Operating medium	Compressed air as per ISO 8573-1:2010 [7:-:-]
Information on operating and pilot media	Operation with oil lubrication possible (required for further use)
Temperature of medium	-20 °C ... 75 °C
Product weight	517 g
Note on materials	RoHS-compliant
Material of adjusting screw	Brass